



Computer Security Products Inc.



Computer Security Products
Inc.

Security Solutions for HP
NonStop® Systems

Presented By:

Maurice Rivas

Partner Relationship Manager

mauricer@CSPSecurity.com

Agenda

- About CSP
- Security and Audit Demands
- CSP Product Suite
- CSP Security Services
- CSP User Groups-Event Participation
- Questions?



About CSP

NonStop® DSPP Partner
since 1987.

- Incorporated in 1988.
- Based in Toronto, Canada.

Develop, Support and
Distribute Security and Audit
Solutions for the HP
NonStop® Market.

Strong skill set and
experience in data security
technologies.

Focused on Product and
Customer Growth.

Business Partner



**Integrity Ready
Partner**



About CSP

Over 250 Customers and over 1000+ licenses World Wide.

Customers include:

- 7 of the world's top 10 banks
- Major Stock Exchanges
- Defense and Healthcare organizations
- Telecommunications providers
- Manufacturers

CSP Products are:

- Itanium ready.
- Innovative.
- Easy to use with GUI interfaces.

Business Partner



**Integrity Ready
Partner**



Partners & Distributors



Tiger Solutions Inc
(South Korea)



Comparex Hungary



High Availability
Systems (Japan)



DeSIS
XXI
(Mexico)



Canam Software



Adexus
(Chile)



Aurigae S.A.
(Spain)

Security And Audit Demand

In the past few years there has been an increased focus on security.

- This focus has been shifting to address internal security as well as external threats.
- Industry regulations such as Sarbanes Oxley and HIPAA have set standards for compliance.
- This has created a demand for increased Security and Audit within the NonStop® install base.
- CSP's products and services complement and improve NonStop® Security and provide enhanced ease of use.

USING SECURITY CONTROLS WITH YOUR NonStop® SYSTEMS TO ADDRESS COMPLIANCE REQUIREMENTS

- COMPLIANCE REQUIRES EFFECTIVE AND AUDITABLE MEASURES IN PLACE
- SARBANES-OXLEY EMPHASIZES PREVENTION AND DETECTION

COMPUTER SECURITY PRODUCTS(CSP) PROVIDES THE FOLLOWING THREE-PRONGED APPROACH TO COMPLIANCE FOCUSING ON PREVENTION AND DETECTION:

1. Identify System-Specific Risks

Every platform has unique settings that are avenues to be tested for unauthorized access. CSP automates the identification of these settings and makes clear recommendations on how to effectively address these risks.

2. Configure Effective Controls

Effective controls need to be configured not only within the security monitor, SAFEGUARD®, but also within powerful subsystems. CSP does both.

3. Automate Testing and Monitoring

Audit records that are never reviewed are NOT an effective control. CSP has the premier audit interfaces for Tandem systems: AuditView®, CSP Passport® and Alert Plus®.



Computer Security Products Inc.

CSP PRODUCT SUITE

CSP Product Suite

**Integrity Ready
Partner**



Security Management

Easy Safeguard Management ([Protect](#))

Comprehensive Audit Reporting ([Auditview](#))

Real Time Intrusion Detection and Alerts ([Alert-Plus](#))

Security Compliance Verification ([TSA](#))

User Accountability

Control, filter and audit user access ([CSP PassPort](#))

Password Management

User Network Password Management and Quality
([NetPass](#))

RSA Two- Factor Authentication ([CSP Authenticator](#))

CSP Product Suite (Contn'd.)

Encryption Products

§ Secure Server for Telnet Access ([SecurTN](#))

§ Encrypted File Transfer ([SecurFTP](#))

§ Encrypted TCP/IP Traffic ([SecurCS](#))

§ Secure Printing ([SecurPrint](#))

Development Tools

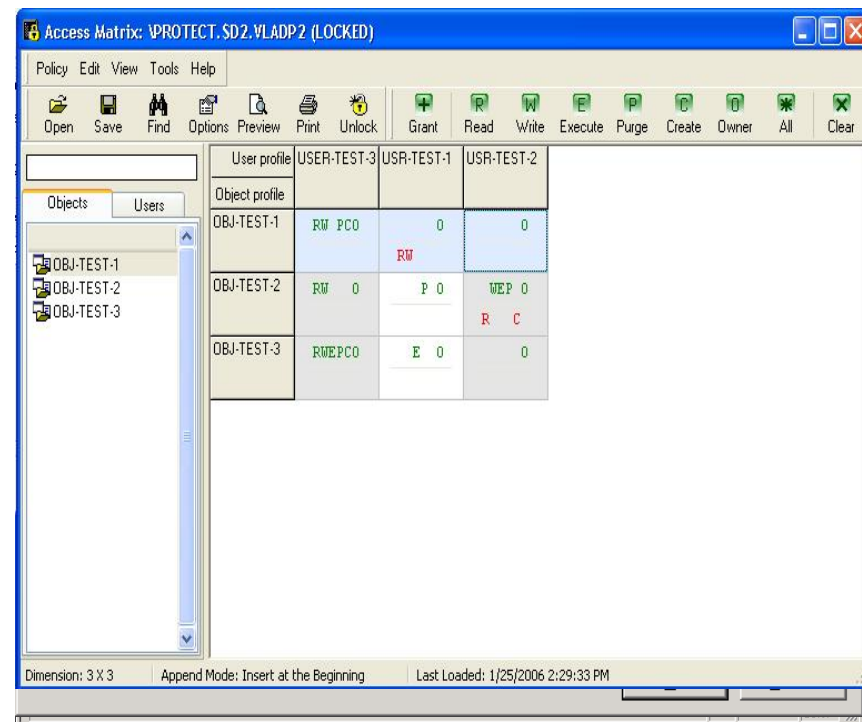
§ XML Enabler ([XML Thunder](#))

**Integrity Ready
Partner**



Protect XP®

- Safeguard Management
- User Management and Accountability
- Policy Management
- Object Management
- Security Compliance Reporting
- Intrusion Detection
- Audit Reporting



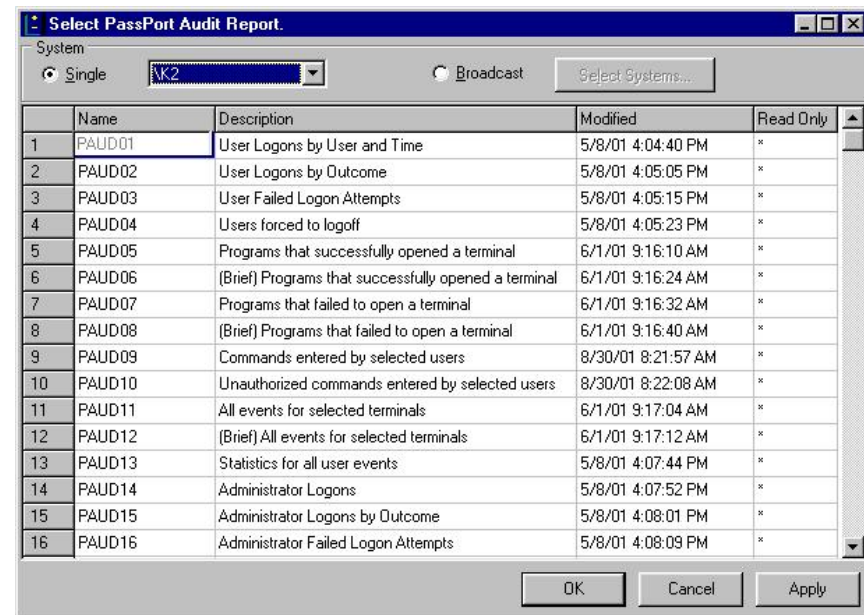
The screenshot shows the 'Access Matrix' window for 'PROTECT.SD2.VLADP2 (LOCKED)'. The interface includes a menu bar (Policy, Edit, View, Tools, Help) and a toolbar with icons for Open, Save, Find, Options, Preview, Print, Unlock, Grant, Read, Write, Execute, Purge, Create, Owner, All, and Clear. On the left, there is a tree view with 'Objects' and 'Users' tabs, showing a list of objects: OBJ-TEST-1, OBJ-TEST-2, and OBJ-TEST-3. The main area displays a table with the following data:

User profile	USER-TEST-3	USR-TEST-1	USR-TEST-2
Object profile			
OBJ-TEST-1	RW PCO	0	0
OBJ-TEST-2	RW 0	P 0	WEF 0
OBJ-TEST-3	RWEP CO	E 0	0

At the bottom of the window, the status bar shows: Dimension: 3 X 3, Append Mode: Insert at the Beginning, and Last Loaded: 1/25/2006 2:29:33 PM.

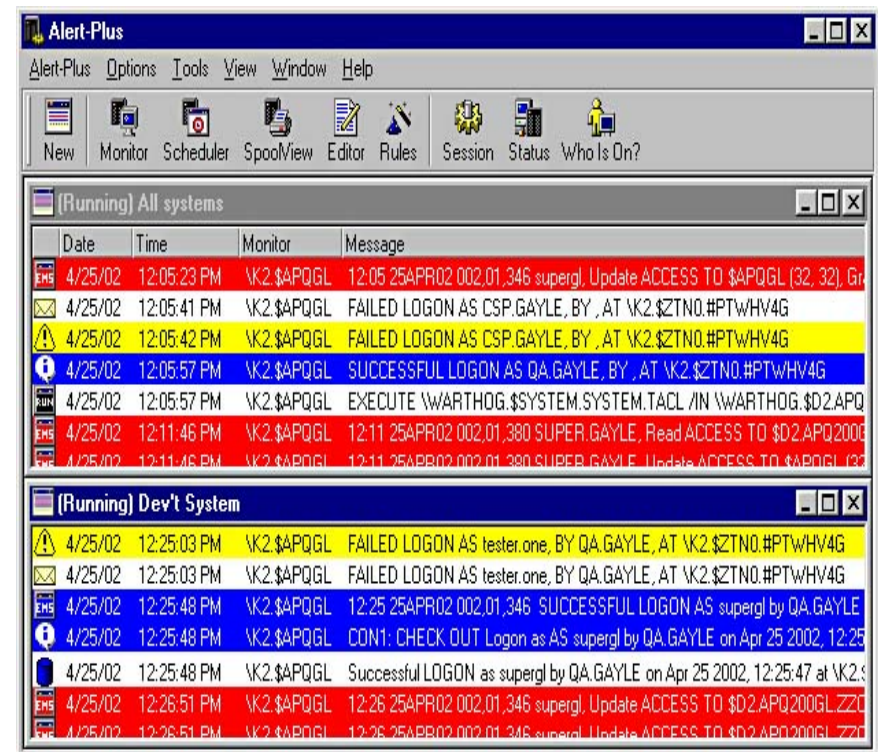
AuditView®

- Powerful reporting package for Safeguard audit
- Capability to sort data from multiple systems
- Provides archive feature to compress and store audit data
- Generates customizable reports using an easy point and click GUI



Alert-Plus®

- Issues immediate alerts when a security policy has been breached
- Allows for user-programmable rules (and a rules wizard)
- Allows simple or complex rules, which involve several conditions that occur over time
- Enables real time actions
- BUILTINS allow you to define a complete rule in a single statement



Tandem Security Analyzer

- A report generator that automatically audits and analyzes the security of HP NonStop® systems.
- Key Features:
 - Detect security loopholes:
 - Weak passwords
 - Orphan files
 - Embedded logons
 - Identify exceptions:
 - Unauthorized Licensed or Progid'd programs.
 - Unauthorized access to sensitive files and programs

```
-----  
$D2.LKPT261.CSPSRV Version 3.40 - System \PROTECT          30 Jun 06, 14:41  
Copyright (C) 1997-2006 Computer Security Products Inc.  
Run by: SUPER.SUPER (255,255) at $VSSCT  
-----
```

CHECK TACL

```
-----  
Checking TACL configuration  
This checks the TACL CONFIGURATION attributes. These values control LOGON and  
LOGOFF processing by TACL.  
-----
```

```
M01-02004 Warning: The AUTOLOGOFFDELAY attribute is set to -1.  
RECOMMENDATION: Set AUTOLOGOFFDELAY to 15. Note: The AUTOLOGOFFDELAY  
setting determines how many minutes TACL delays before  
logging off an idle terminal.
```

```
M01-02006 Warning: The REMOTESUPERID attribute is set to -1.  
RECOMMENDATION: Set REMOTESUPERID to 0. Note: If the value of  
REMOTESUPERID is zero, TACL will not permit users at  
remote terminals to logon as the SUPER ID. (A remote  
terminal is one connected to another system in the  
network).
```

```
M01-02009 Warning: The CMONTIMEOUT attribute is set to 10.  
RECOMMENDATION: Set CMONTIMEOUT to 30. Note: This value specifies the  
number of seconds TACL is to wait for a reply from $CMON.
```

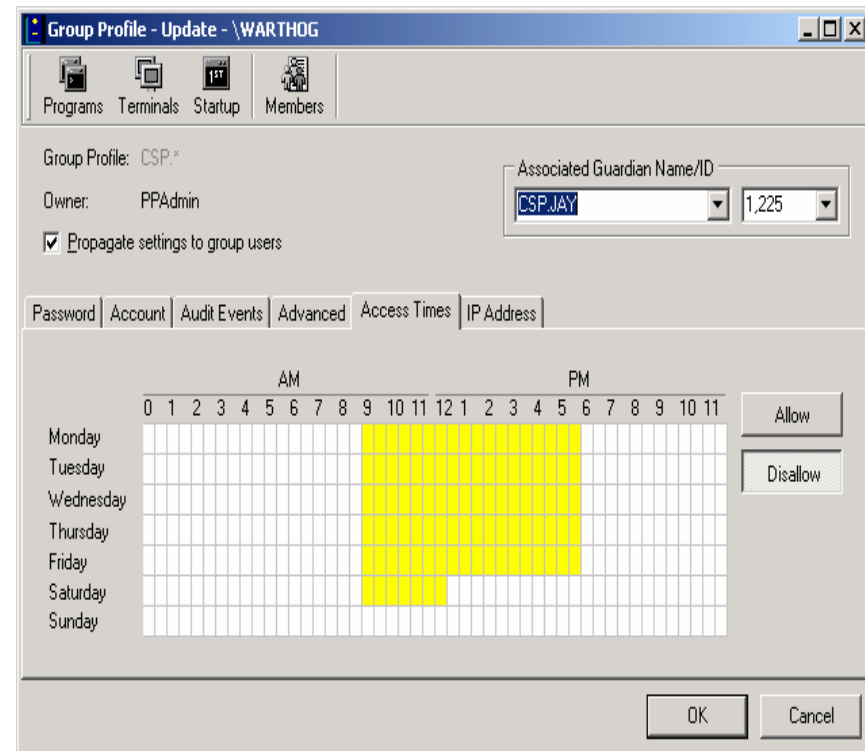
```
M01-02014 Observe: The BLINDLOGON attribute is controlled by SAFEGUARD.  
RECOMMENDATION: Examine the CHECK SAFEGUARD section of this report.
```

```
M01-02015 Observe: The NAMELOGON attribute is controlled by SAFEGUARD.  
RECOMMENDATION: Examine the CHECK SAFEGUARD section of this report.
```

```
M01-02016 Warning: The STOPONFEMODEMERR attribute is set to 0.  
RECOMMENDATION: Set STOPONFEMODEMERR to -1.
```

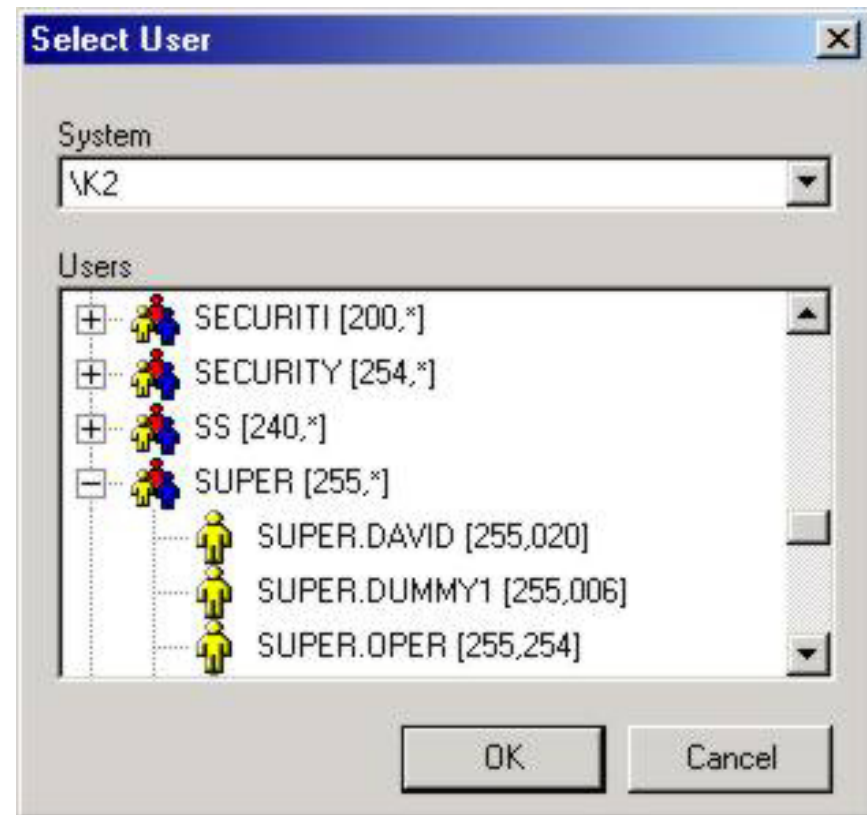
CSP Passport®

- Provides user and command control, password quality enforcement and comprehensive auditing
- CSP Passport allocates and filters user access to systems, programs and commands.
- Also monitors all user terminal input/output operations and provides an early warning for errors and non-permissible functions.
- Merged Audit: interrogation using the Safeguard reporting tool Auditview



CSP NetPass®

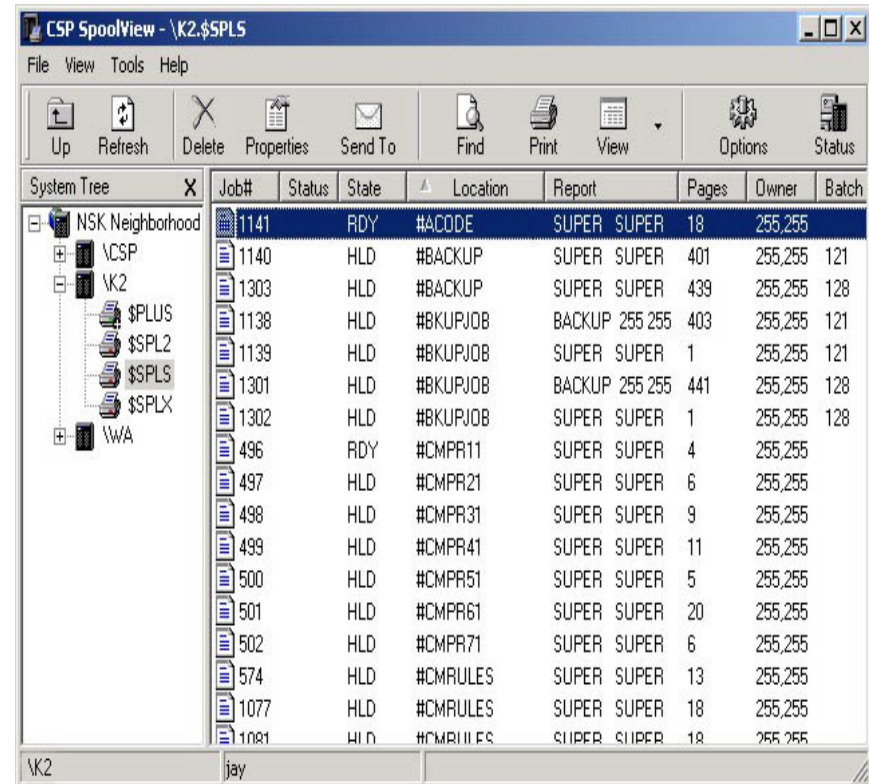
- CSP NetPass is an efficient time saving tool that allows Users and/or Administrators to easily manage passwords on many nodes at once
- This can be achieved through the GUI or from the command line interface
- CSP NetPass can operate with or without Safeguard installed. If installed, CSP NetPass will use the Safeguard interface to change passwords.
- The CSP NetPass GUI allows browsing of the network for User or Alias IDs



CSP SpoolView®

As well as simplifying spooler job management and viewing, CSP SpoolView can also:

- Email your jobs using your default email program
- Discover which systems are available and view which spoolers are available on each system
- Download print jobs to your PC
- Save jobs as an edit file, plain text or as HTML on the NonStop Server
- Save jobs as HTML or RTF (rich text format) on your PC



The screenshot shows the CSP SpoolView application window with the following data:

Job#	Status	State	Location	Report	Pages	Owner	Batch
1141	RDY	#ACODE	SUPER SUPER	18	255,255		
1140	HLD	#BACKUP	SUPER SUPER	401	255,255	121	
1303	HLD	#BACKUP	SUPER SUPER	439	255,255	128	
1138	HLD	#BKUPJOB	BACKUP 255 255	403	255,255	121	
1139	HLD	#BKUPJOB	SUPER SUPER	1	255,255	121	
1301	HLD	#BKUPJOB	BACKUP 255 255	441	255,255	128	
1302	HLD	#BKUPJOB	SUPER SUPER	1	255,255	128	
496	RDY	#CMR11	SUPER SUPER	4	255,255		
497	HLD	#CMR21	SUPER SUPER	6	255,255		
498	HLD	#CMR31	SUPER SUPER	9	255,255		
499	HLD	#CMR41	SUPER SUPER	11	255,255		
500	HLD	#CMR51	SUPER SUPER	5	255,255		
501	HLD	#CMR61	SUPER SUPER	20	255,255		
502	HLD	#CMR71	SUPER SUPER	6	255,255		
574	HLD	#CMRULES	SUPER SUPER	13	255,255		
1077	HLD	#CMRULES	SUPER SUPER	18	255,255		
1081	HLD	#CMRULES	SUPER SUPER	18	255,255		

CSP Authenticator

- RSA user authentication technology for HP NonStop® Servers. RSA token is widely trusted and used for authentication using 2-Factor Token Identification Techniques.
- Functions with or without SAFEGUARD, and communicates via TCP/IP with RSA Authentication Manager.
- CSP Authenticator runs in two modes:
 - As a Pathway Server, CSP Authenticator can be called from a user application to authenticate users.
 - As a SAFEGUARD SEEP, CSP Authenticator processes all calls to USER_AUTHENTICATE, which includes all logons via TACL and SAFEGUARD.



WEB & Encryption

- ComForte GmbH develops high-performance host connectivity and encryption software for users of HP NonStop® systems.

- CSP is a Comforte Development partner.

- CSP distributes the Comforte product suite Wc



- SecurTN®

- SecurFTP®

- SecurCS®

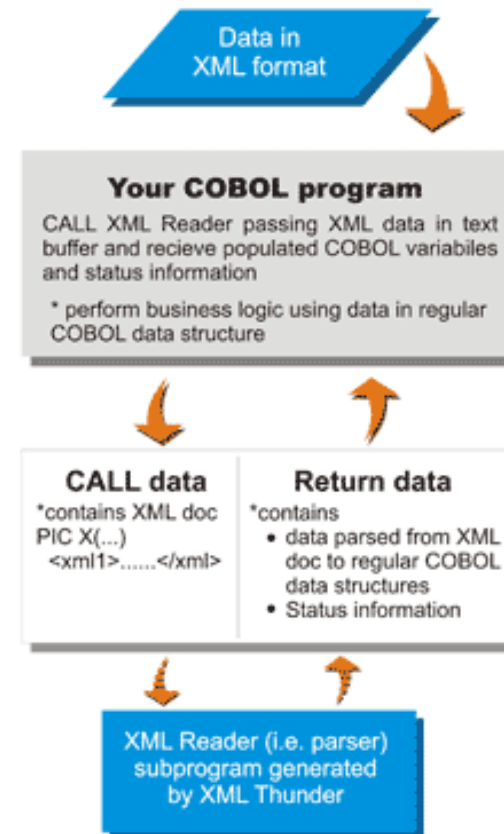
- SecurPrint®

XML Thunder® for NonStop®

- XML Thunder® is a proven Windows based designer and C as well as COBOL code generator for multiple platforms and Operating Systems which now includes HP NonStop.

- It allows C and COBOL language XML document level interfaces, to read or write (i.e. parse or create) XML documents.

- <http://nonstop.xmlthunder.com/>





Computer Security Products Inc.

CSP Security Services

CSP Security Services

Security Services

- Security Assessment
- Security Health check
- Security Architecture Design & Implementation
- Security Training:
 - CSP Training Centre
 - On Site (Local / Remote)

CSP's Value Add.

CSP can:

- Assist in meeting your security and audit needs.
- Provide a proven and easy to use solution to meet compliance requirements
- Complement and enhance Safeguard for NonStop System

CSP is:

- A Professional organization.
- Flexible and easy to work with.
- Provider of proven, reliable products and services.

Q & A

CSF